

**ALLEGATI**

# **CERTIFICATO DI TARATURA E CONFORMITA' DEL FONOMETRO**

# SIT

## SERVIZIO DI TARATURA IN ITALIA

Italian Calibration Service



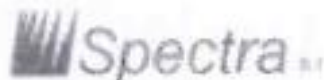
### CENTRO DI TARATURA I63

Calibration Centre

### Spectra Srl

Laboratorio di Acustica

039 613321



Via Belvedere, 42  
Arcore (MB)  
Area Laboratori

039 6133235  
spectra@spectra.it  
www.spectra.it

### **ESTRATTO DEL CERTIFICATO DI TARATURA N. 6455**

Extract of Calibration Certificate No. 6455

Data di Emissione **2011/02/02**

Date of Issue

Destinatario **Eurogeo Snc**

Addessee  
**Via Pasglia, 21  
Bergamo (BG)**

#### Condizioni ambientali durante la misura

Environmental parameters during measurements

Pressione	<b>1000,0 hPa ± 0,5 hPa</b>	(rif. 920,5 hPa ± 120,5 hPa)
Temperatura	<b>23,4 °C ± 1,0 °C</b>	(rif. 23,0 °C ± 3,0 °C)
Umidità Relativa	<b>32,9 UR% ± 3 UR%</b>	(rif. 47,5 UR% ± 22,5 UR%)

#### Strumenti sottoposti a verifica

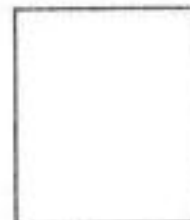
Instrumentation under test

Strumento	Costruttore	Modello	N°Serie/Matricola
Fonometro	LARSON DAVIS	L&D 831	1795
Microfono	PCB Piezotronics	PCB 377B02	108900
Preamplificatore	LARSON DAVIS	L&D PRM831	012589

Il Responsabile del Centro

Head of the Centre

Emilio Caglio



# SIT

SERVIZIO DI TARATURA IN ITALIA  
Italian Calibration Service



CENTRO DI TARATURA 163

Calibration Centre

**Spectra Srl**

Laboratorio di Acustica

039 6133321



Via Belvedere, 42

Arcore (MB)

Area Laboratori

039 61333235

spectra@spectra.it

www.spectra.it

## ESTRATTO DEL CERTIFICATO DI TARATURA N. 6671

Extract of Calibration Certificate No. 6671

Data di Emissione 2011/04/06

Date of Issue

Destinatario

Addresssee

Eurogeo Snc

Via Paglia, 21

Bergamo (BG)

### Condizioni ambientali durante la misura

Environmental parameters during measurements

Pressione 1005,5 hPa  $\pm$  0,5 hPa (rif. 1013,3 hPa  $\pm$  120,5 hPa)

Temperatura 25,4 °C  $\pm$  1,0 °C (rif. 23,0 °C  $\pm$  3,0 °C)

Umidità Relativa 26,8 UR%  $\pm$  3 UR% (rif. 47,5 UR%  $\pm$  22,5 UR%)

### Strumenti sottoposti a verifica

Instrumentation under test

Strumento Calibratore	Costruttore	Modello	N° Serie/Matricola
	DELTA OHM	HD 9101	99007135

Il Responsabile del Centro

Head of the Centre

Emilio Caglio



# SIT

SERVIZIO DI TARATURA IN ITALIA  
Italian Calibration Service



CENTRO DI TARATURA 163

Calibration Centre

**Spectra Srl**

Laboratorio di Acustica

039 6133321



Via Belvedere, 42

Arcore (MB)

Area Laboratori

039 61333235

spectra@spectra.it

www.spectra.it

## ESTRATTO DEL CERTIFICATO DI TARATURA N. 6672

Extract of Calibration Certificate No. 6672

Data di Emissione 2011/04/06

Date of Issue

Destinatario

Addresssee

Eurogeo Snc

Via Paglia, 21

Bergamo (BG)

### Condizioni ambientali durante la misura

Environmental parameters during measurements

Pressione 1005,5 hPa  $\pm$  0,5 hPa (rif. 1013,3 hPa  $\pm$  120,5 hPa)

Temperatura 25,3 °C  $\pm$  1,0 °C (rif. 23,0 °C  $\pm$  3,0 °C)

Umidità Relativa 26,3 UR%  $\pm$  3 UR% (rif. 47,5 UR%  $\pm$  22,5 UR%)

### Strumenti sottoposti a verifica

Instrumentation under test

Strumento	Costruttore	Modello	N° Serie/Matricola
Fonometro	01 dB	01 dB SOLO	60229
Microfono	01 dB	MCE 212	75362
Preamplificatore	01 dB	01 dB 21S	12950

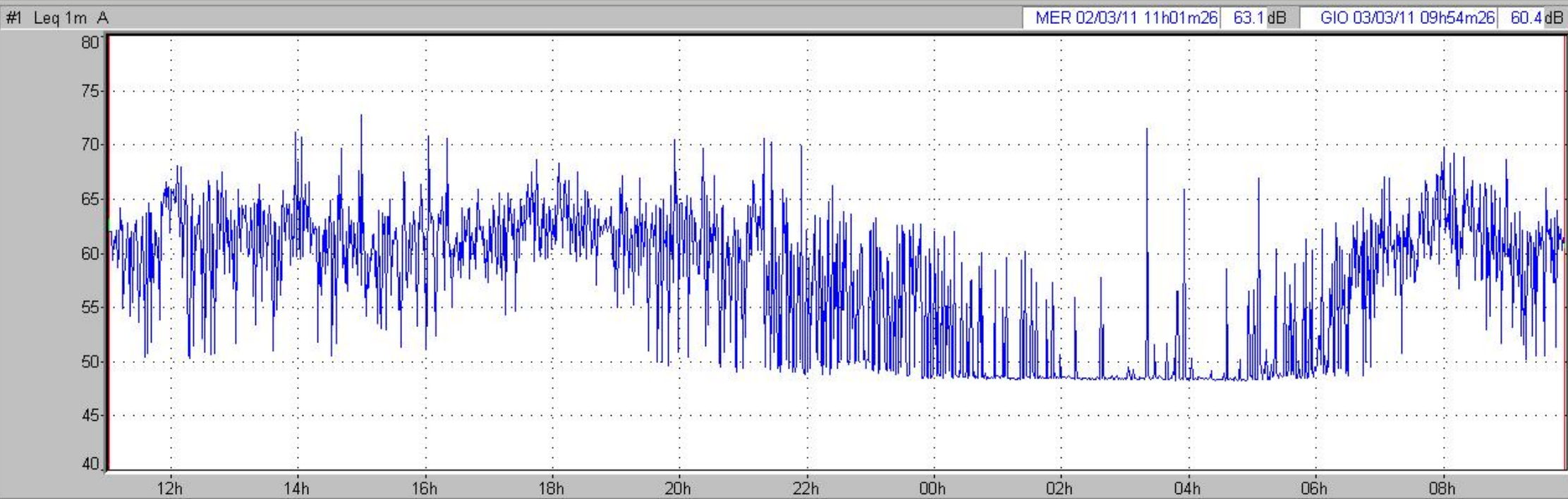
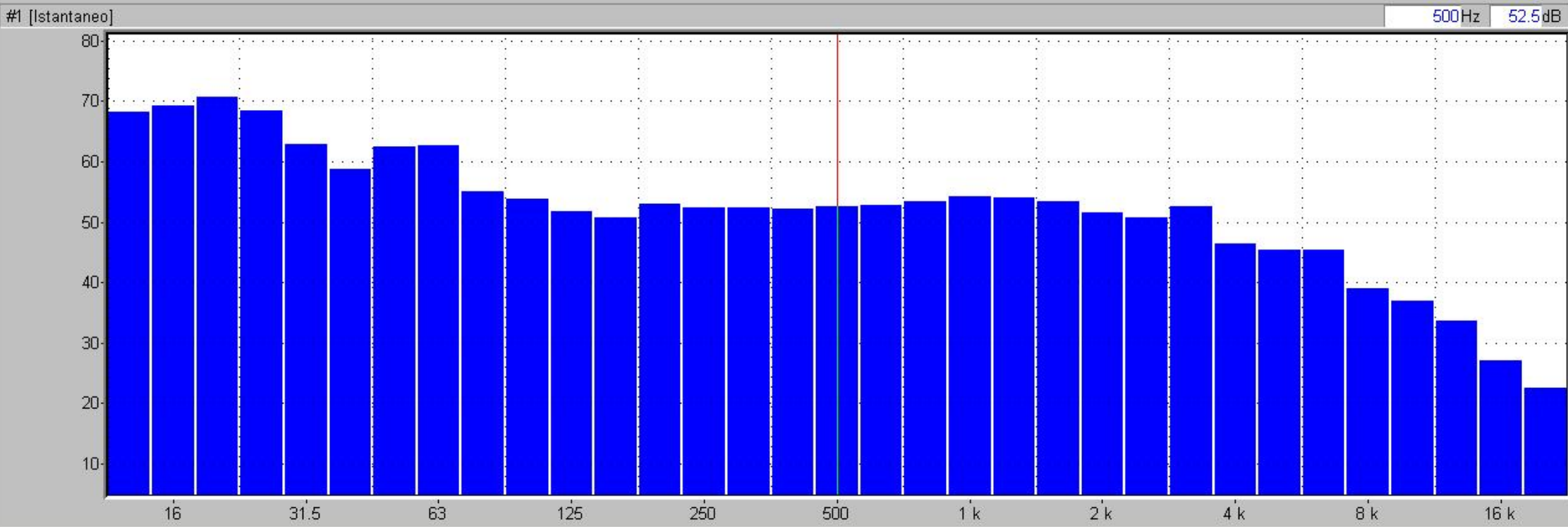
Il Responsabile del Centro

Head of the Centre

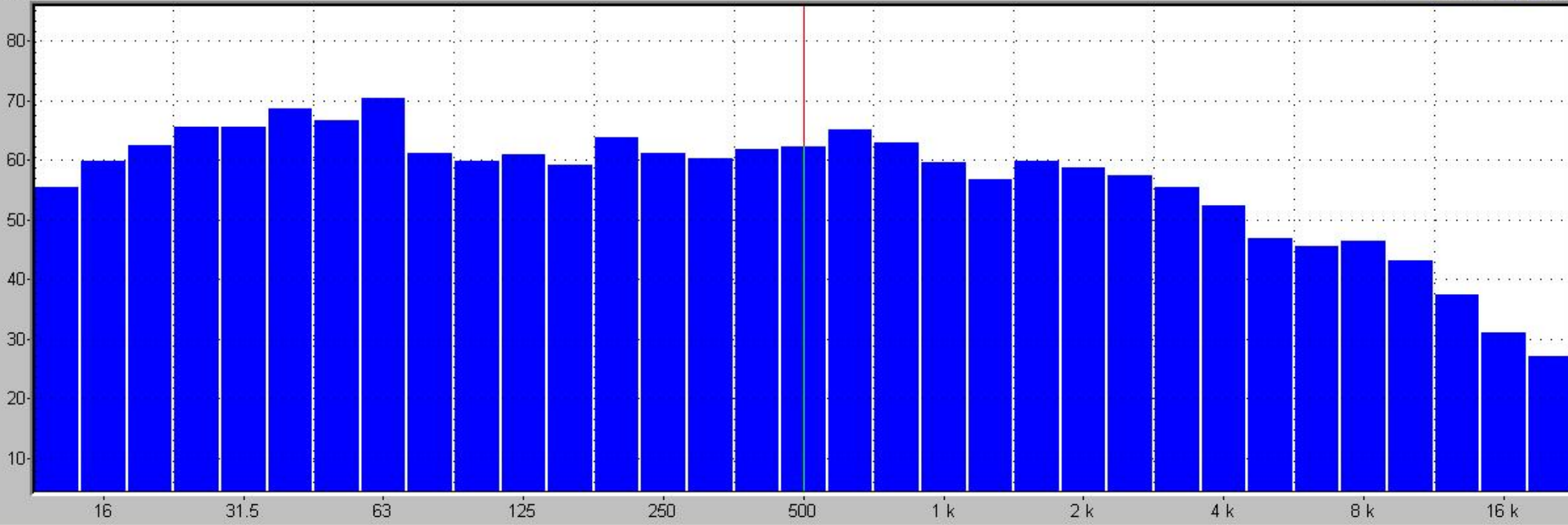
Emilio Caglio



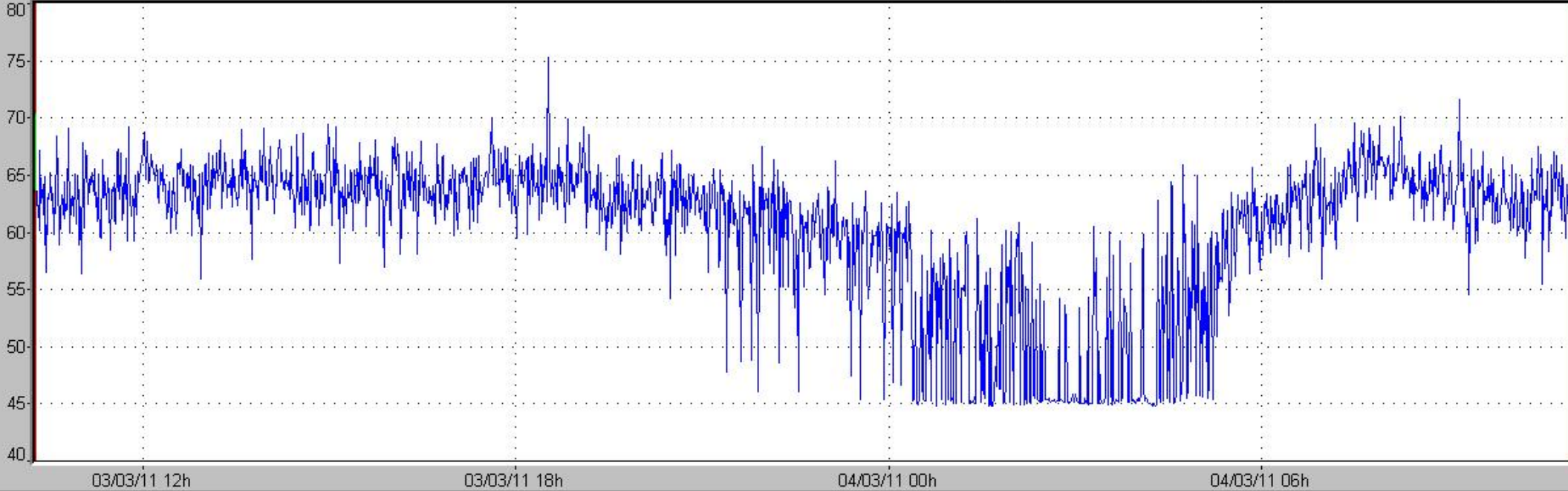
**GRAFICI DELLE  
IMMISSIONI SONORE MONITORATE**

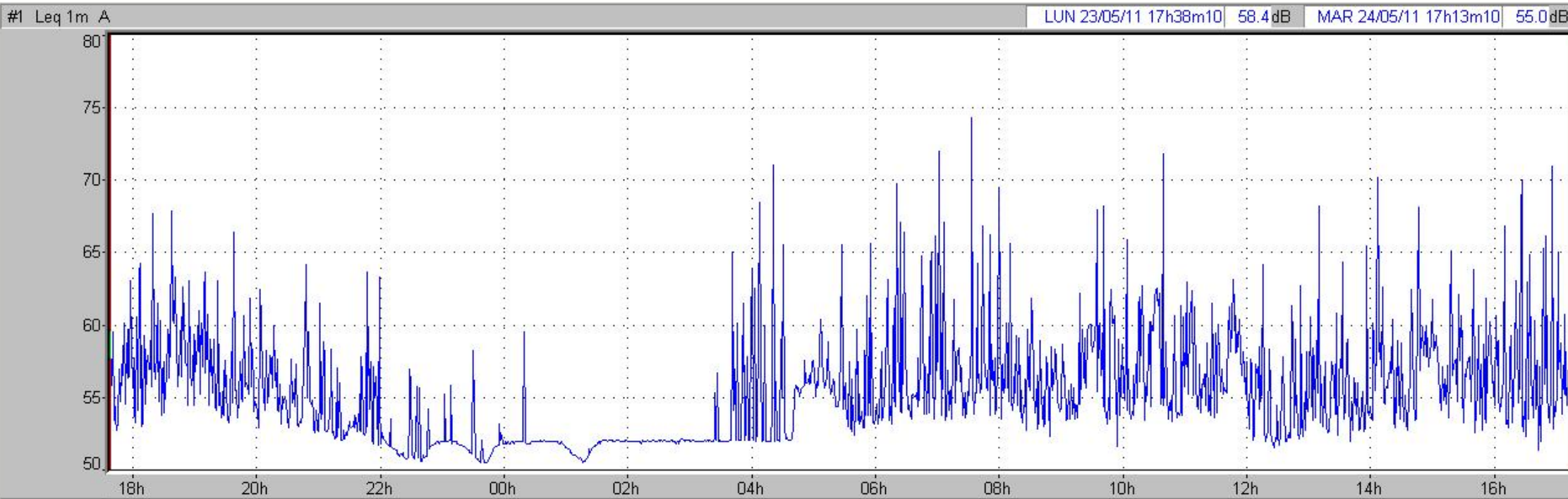
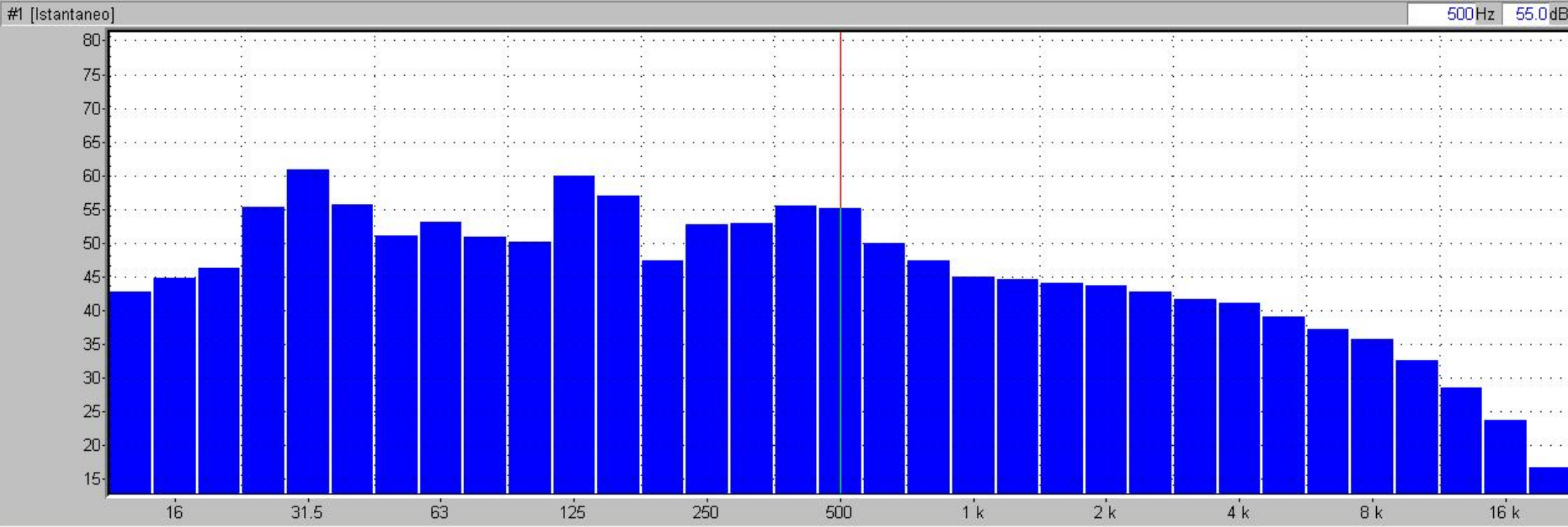


#2 [Istantaneo] 500Hz 62.1 dB



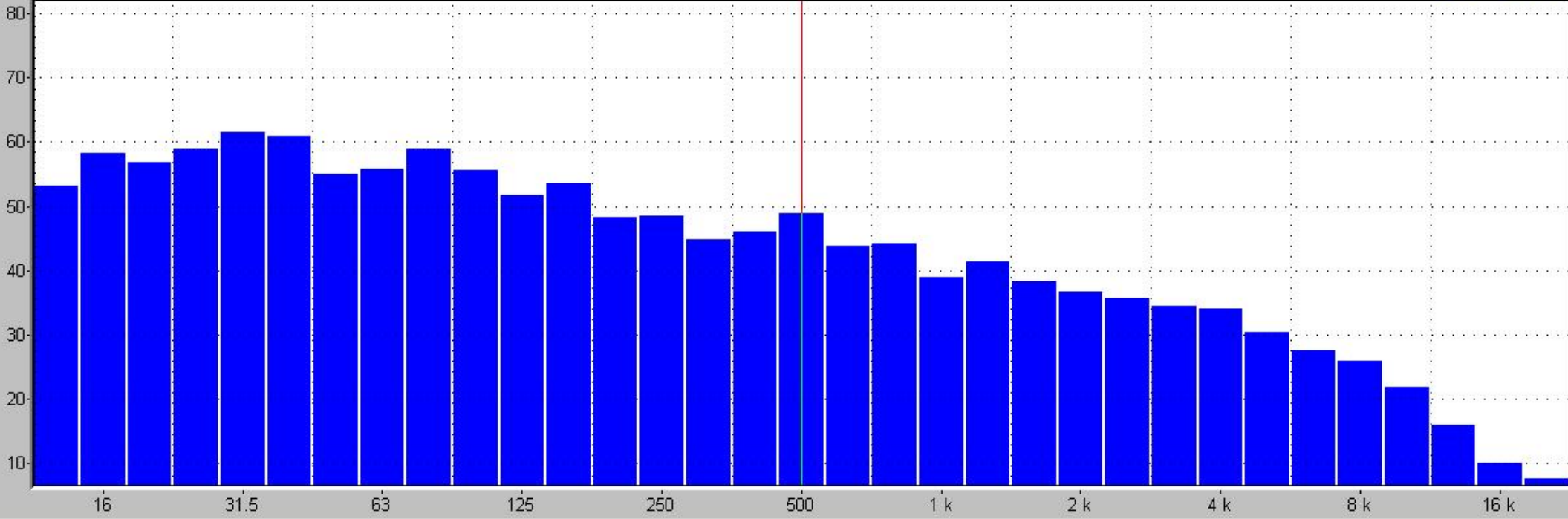
#2 Leq 1m A GIO 03/03/11 10h16m10 | 70.3 dB | VEN 04/03/11 10h59m10 | 68.1 dB



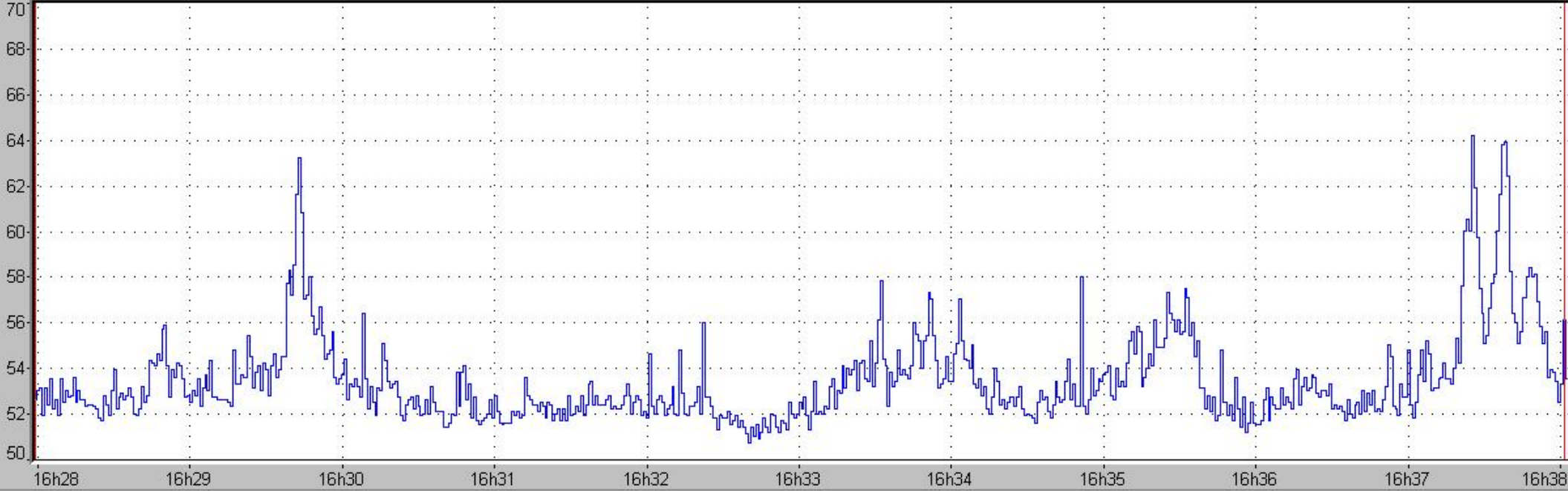




#1 [Istantaneo] 500Hz 48.8dB

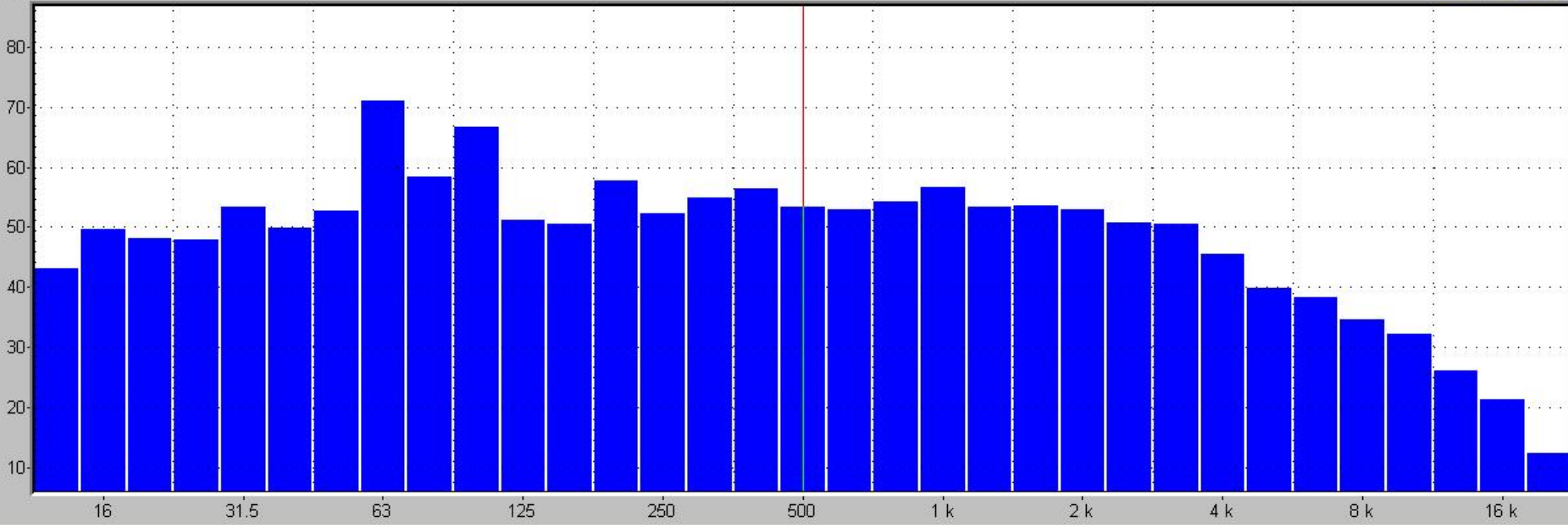


#1 Leq 1s A VEN 17/06/11 16h27m59 52.6dB VEN 17/06/11 16h38m01 56.1dB

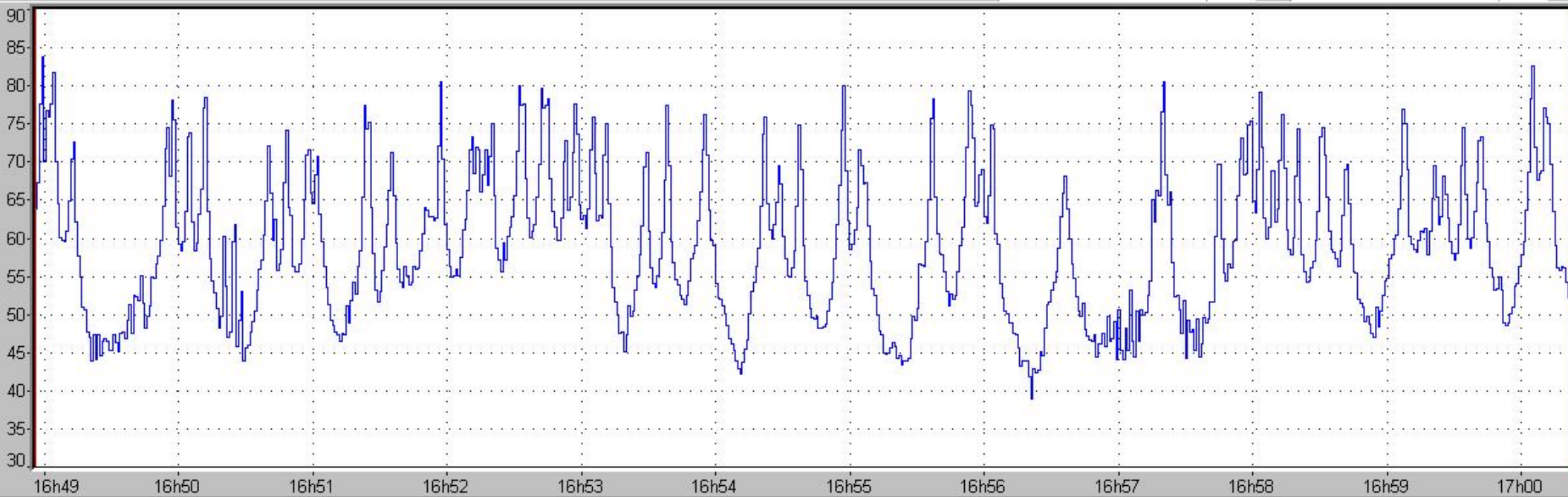




#2 [Istantaneo] 500Hz 53.3dB

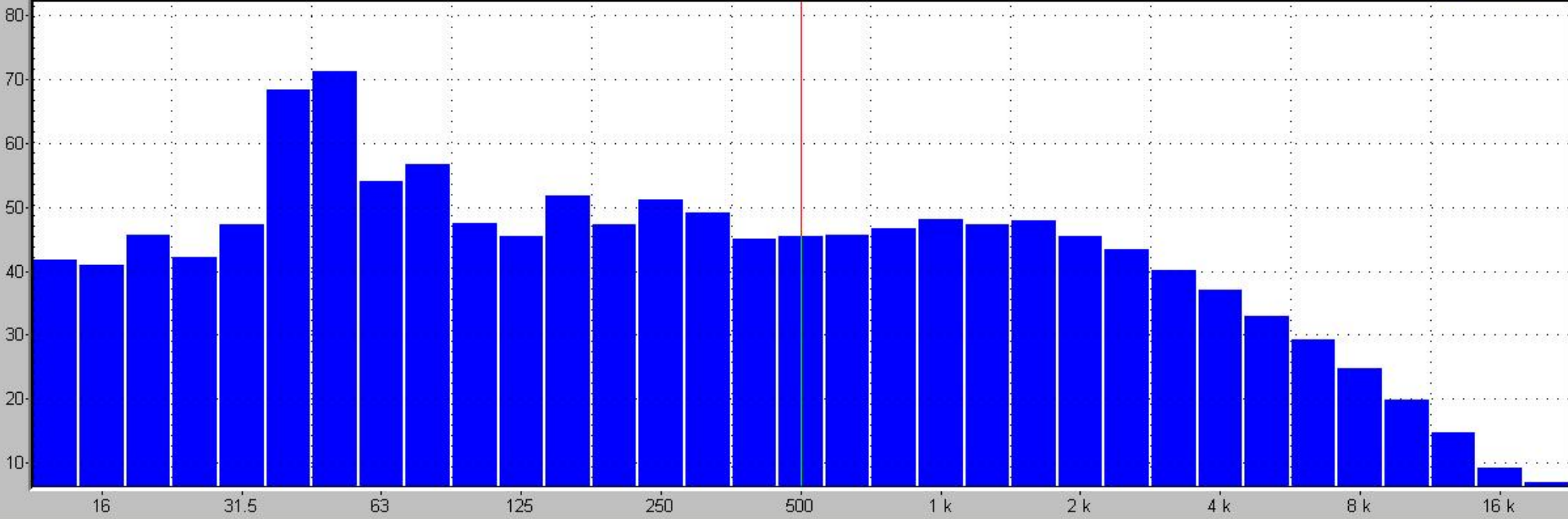


#2 Leq 1s A VEN 17/06/11 16h48m56 63.8dB VEN 17/06/11 17h00m21 52.1dB

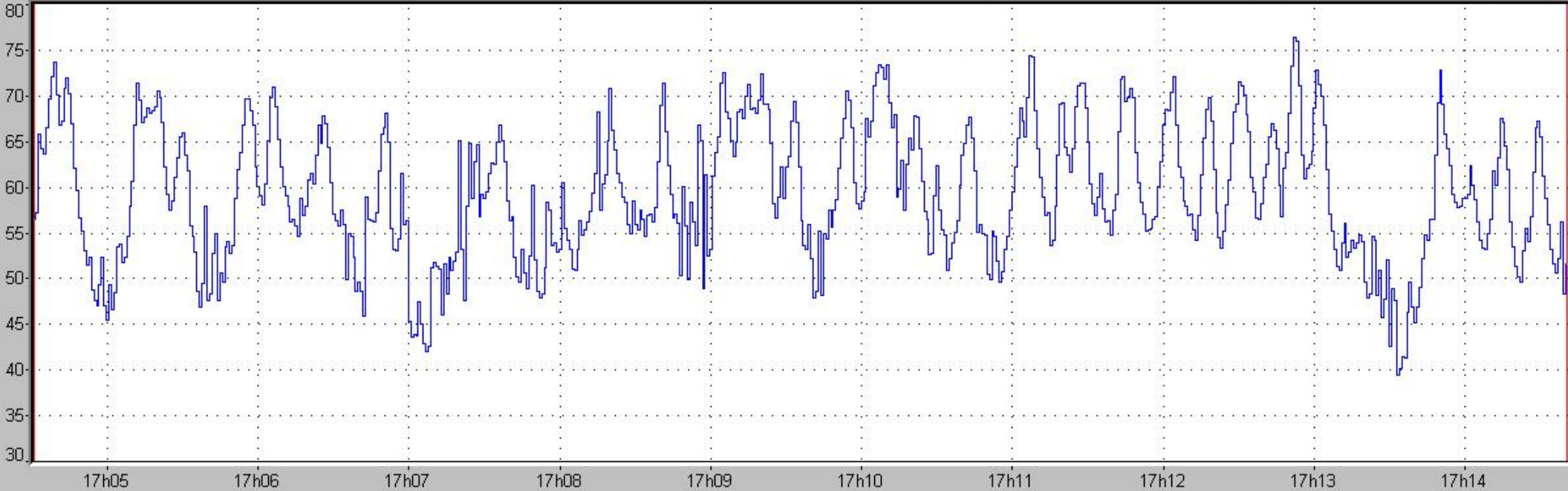


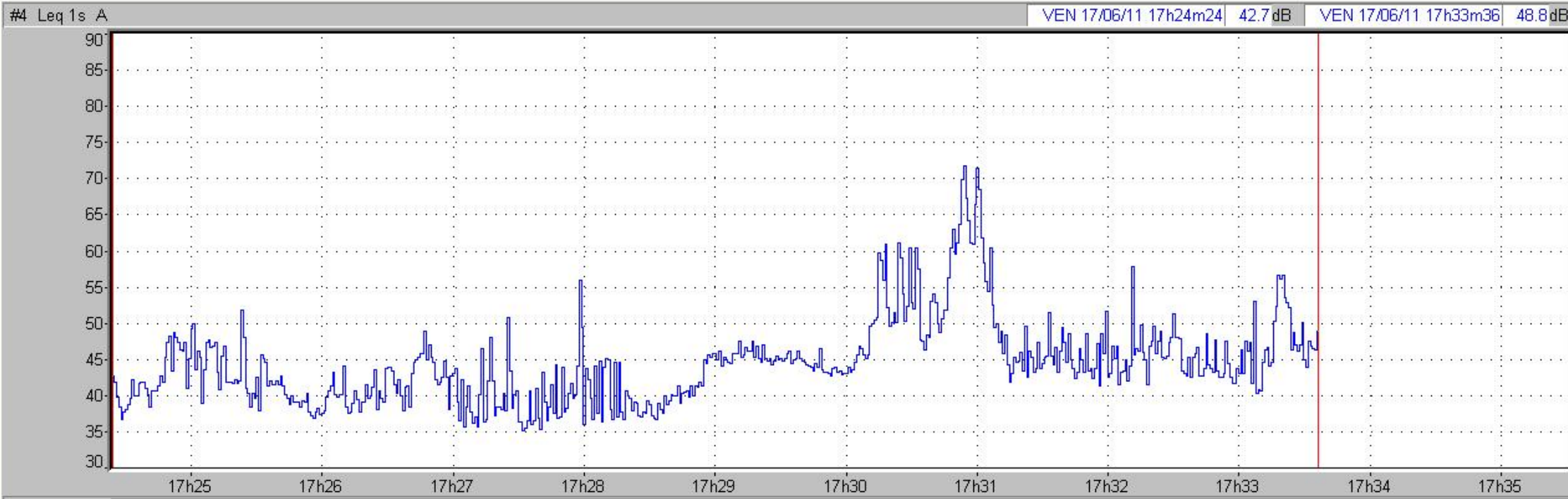
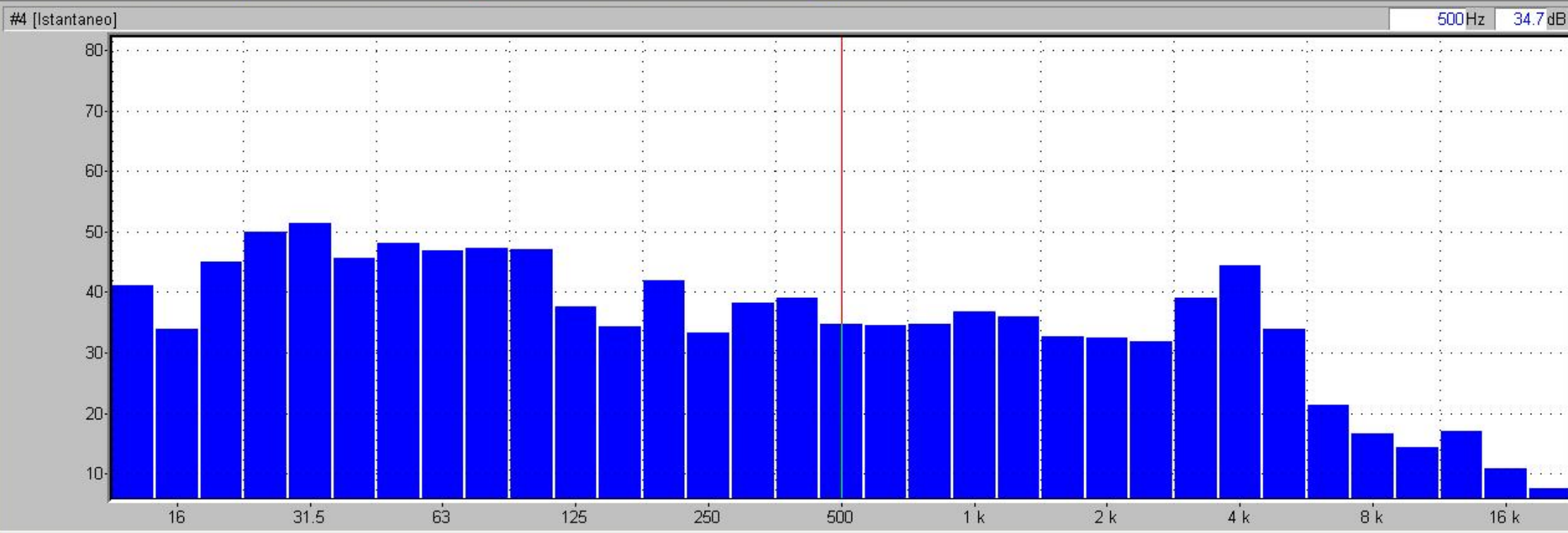


#3 [Istantaneo] 500Hz 45.4dB



#3 Leq 1s A VEN 17/06/11 17h04m31 | 56.5dB | VEN 17/06/11 17h14m40 | 51.6dB

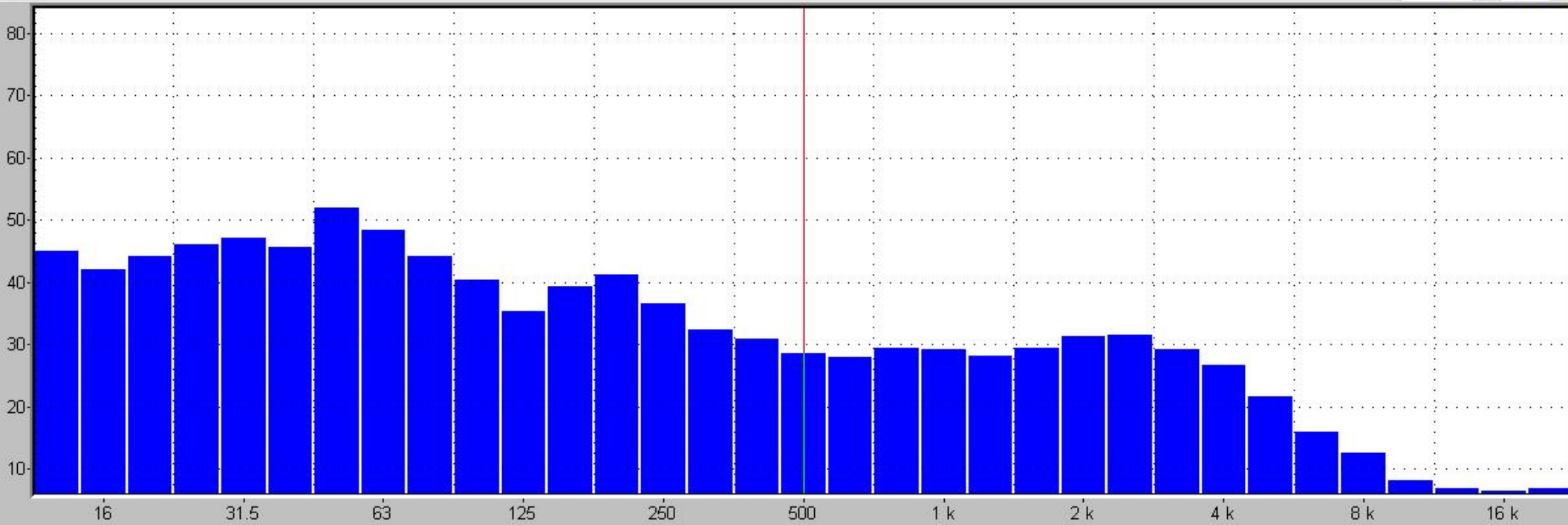






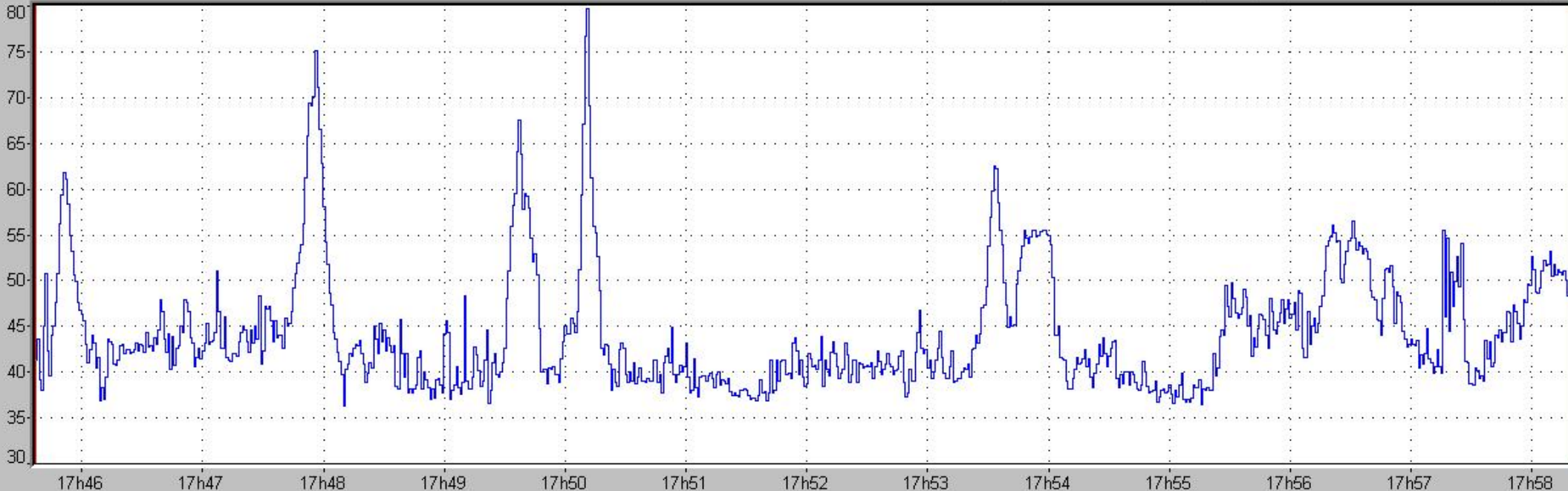
#5 [Istantaneo]

500Hz 28.5 dB



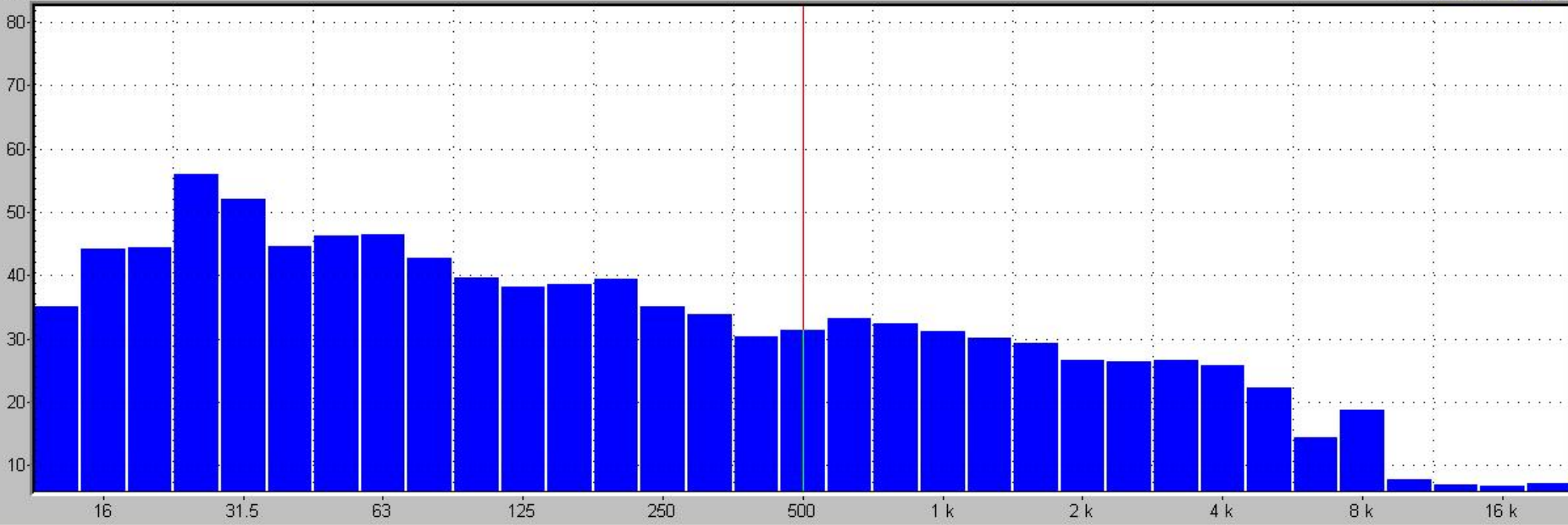
#5 Leq 1s A

VEN 17/06/11 17h45m37 | 41.2 dB | VEN 17/06/11 17h58m19 | 48.4 dB

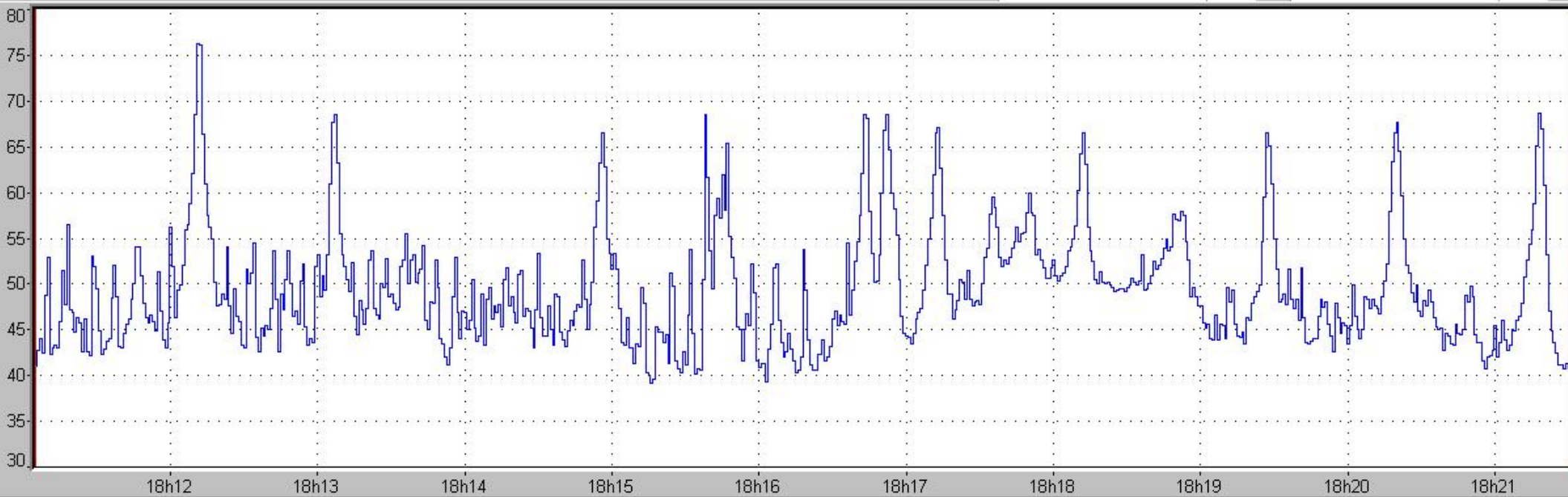


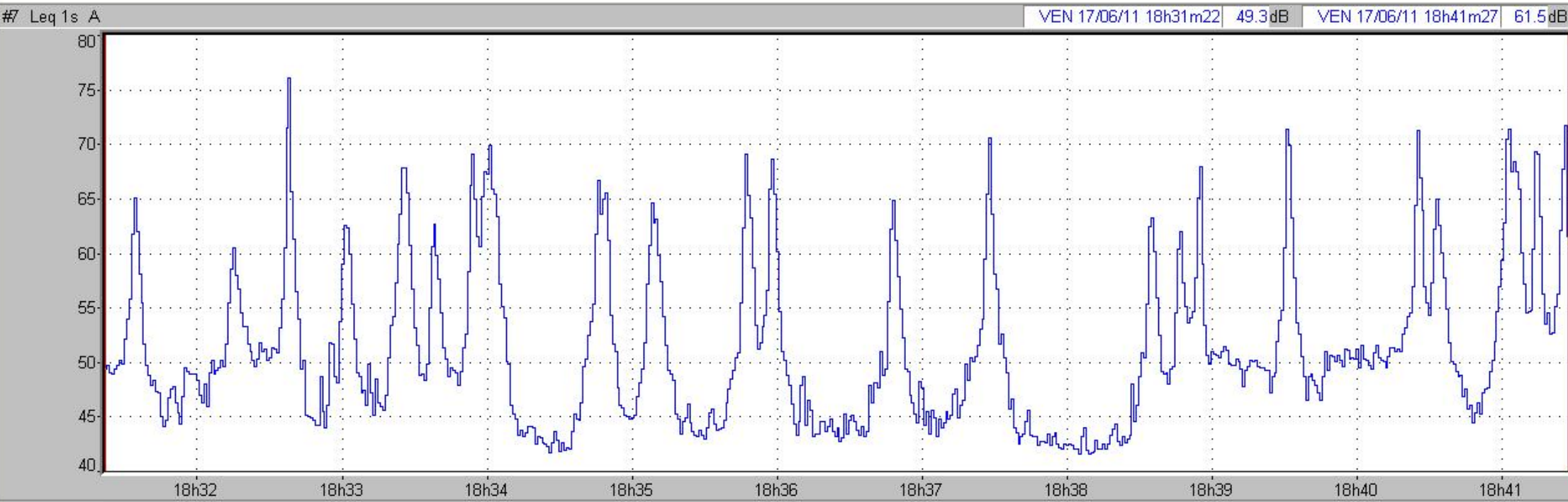
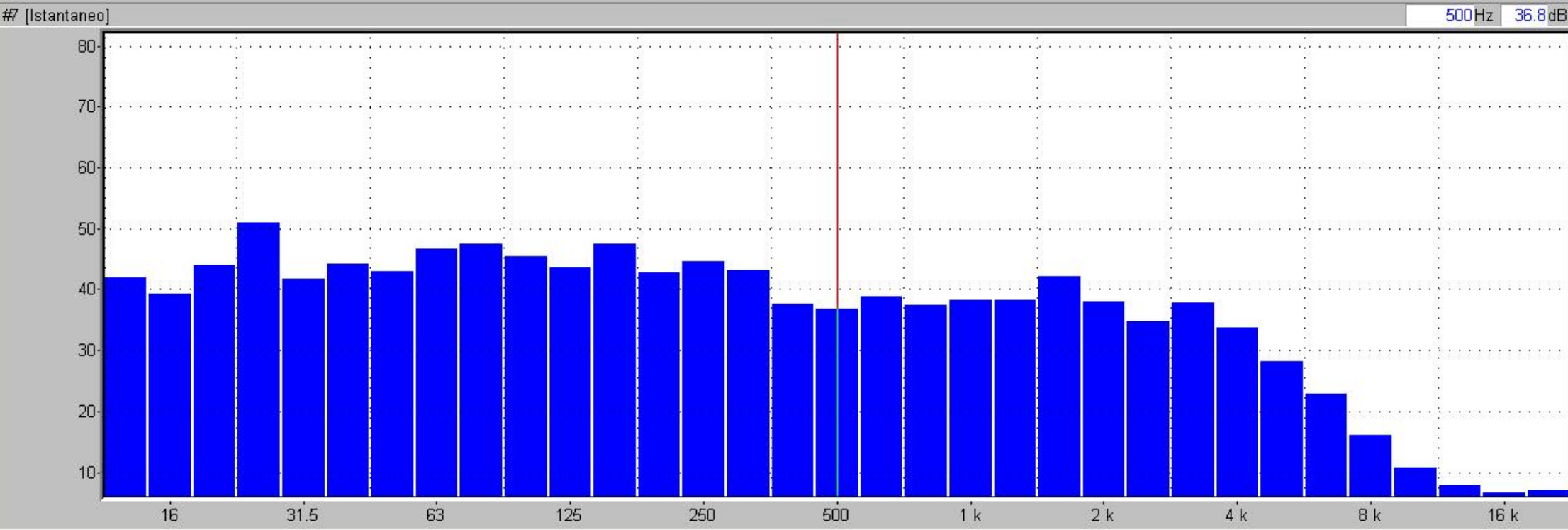


#6 [Istantaneo] 500Hz 31.2dB

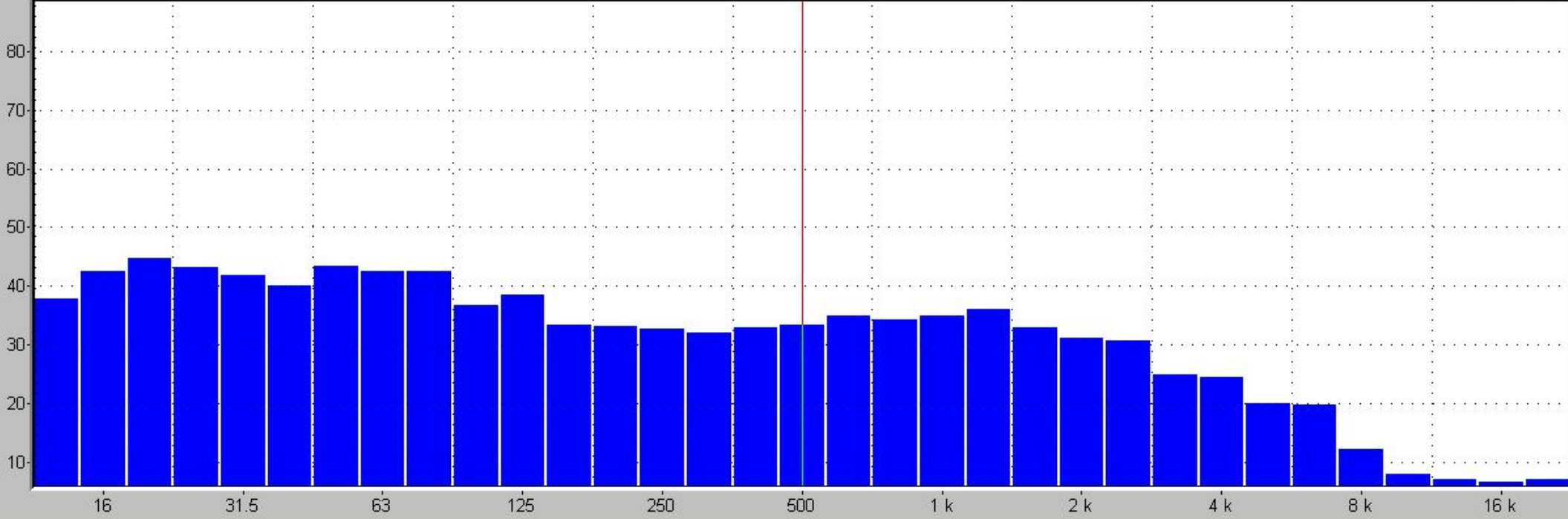


#6 Leq 1s A VEN 17/06/11 18h11m05 | 41.0dB | VEN 17/06/11 18h21m30 | 40.7dB

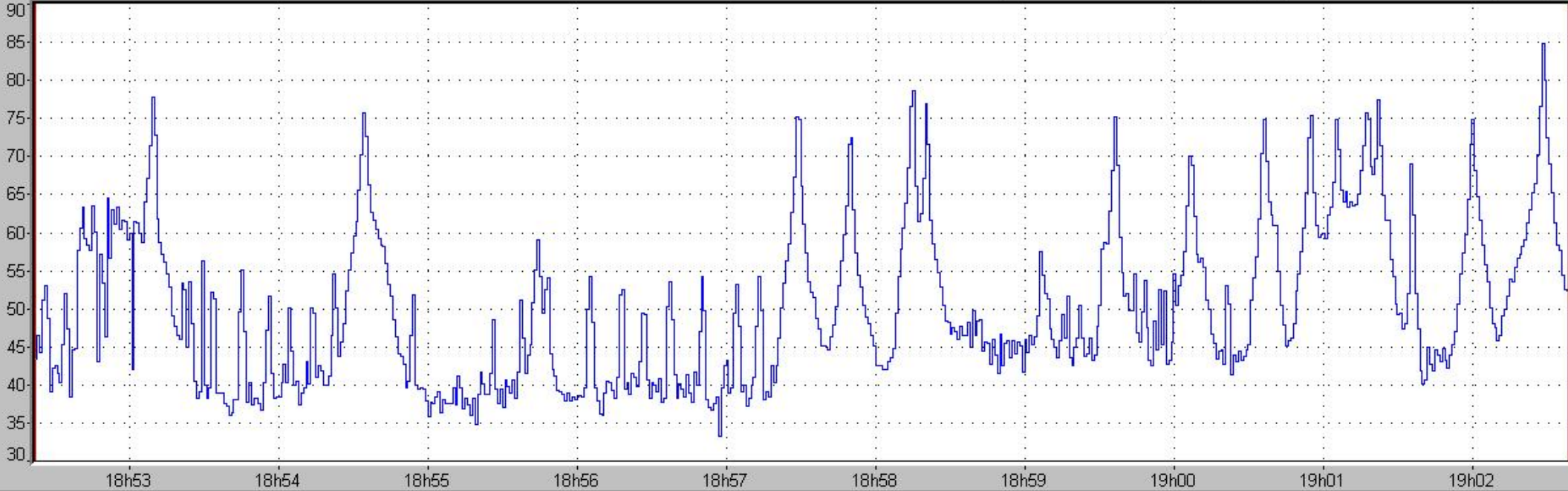




#8 [Istantaneo] 500Hz 33.3dB



#8 Leq 1s A VEN 17/06/11 18h52m22 43.3dB VEN 17/06/11 19h02m38 52.2dB





## TAVOLE